

CONCEPTUAL DRAWINGS FOR:
CADV ADDITION

305 FIFTH STREET
CAMDEN, MISSOURI

columbia associates

architecture commercial interior design site planning
p.o. box 41 camden, missouri 65205 573.442.8888 fax 573.443.3910
34 camden court camden, missouri 65020 573.346.3000 fax 573.346.3000

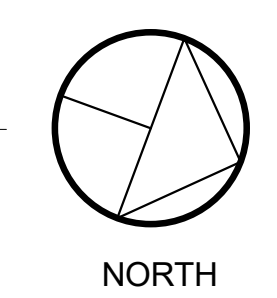
REVISIONS	
NUMBER	DATE

ISSUE DATE: 2019-08-28

JOB NUMBER: 19-907

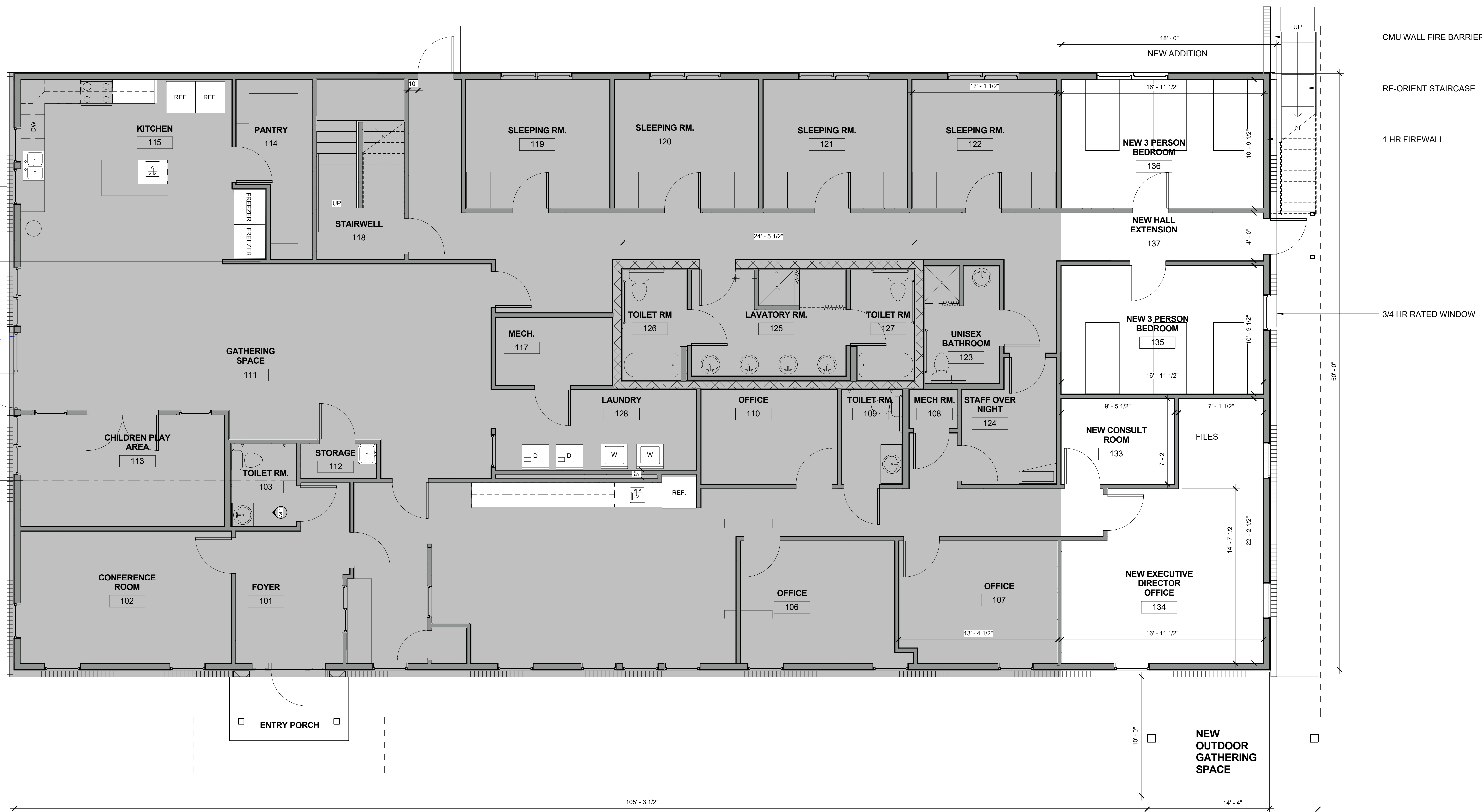
A0.3
SITE PLAN

1 SITE PLAN
1/8" = 1'-0"



NORTH

8/28/2019 1:35:31 PM



CONCEPTUAL DRAWINGS FOR:
CADV ADDITION
 305 FIFTH STREET
 CAMDEN, MISSOURI

This Drawing is the property of Columbia Associates. Unauthorized reproduction is prohibited.

columbia associates

architecture commercial interior design site planning
 p.o. box 41 camden, missouri 65205 573.442.8888 fax 573.443.3910
 34 camden court camden, missouri 65020 573.346.3000 fax 573.346.3000

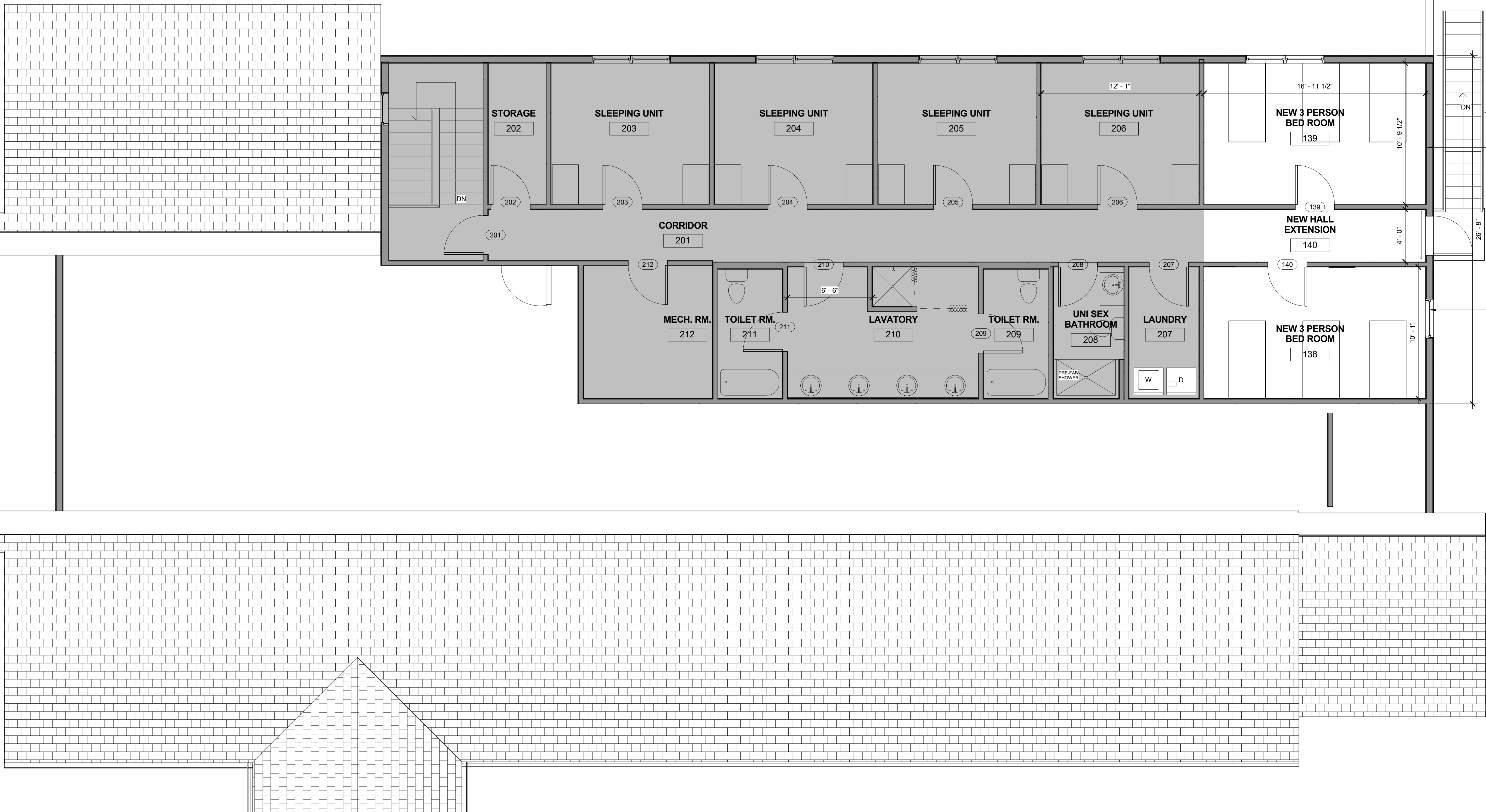
REVISIONS	
NUMBER	DATE

ISSUE DATE: 2019-08-28
 JOB NUMBER: 19-907

A1.1
 FIRST FLOOR PLAN

1 FIRST FLOOR ADDITION - 882 SF
 1/4" = 1'-0"

8/28/2019 1:35:33 PM



RECONFIGURED STAIRCASE
 1 HR FIREWALL BEHIND STAIR
 3/4 HR RATED WINDOW

1 SECOND FLOOR ADDITION 468 SF
 1/4" = 1'-0"

CONCEPTUAL DRAWINGS FOR:
CADV ADDITION

305 FIFTH STREET
 CAMDEN, MISSOURI

This Drawing is the property of Columbia Associates. Unauthorized reproduction is prohibited.

columbia associates

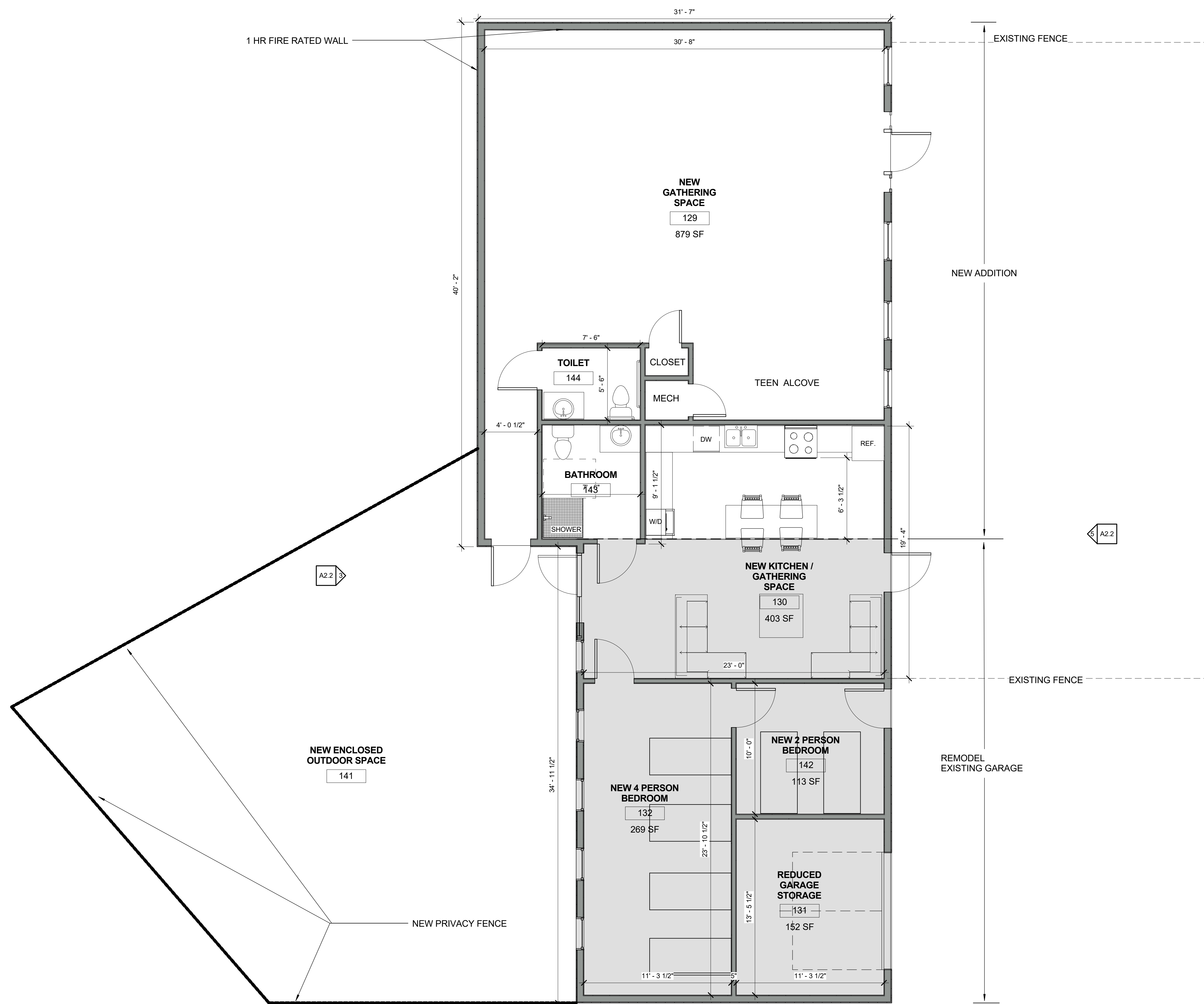
architecture commercial interior design site planning
 p.o. box 41 camden, missouri 65205 573.442.8888 fax 573.443.3910
 34 camden court camden, missouri 65020 573.346.3000 fax 573.346.3000

REVISIONS	
NUMBER	DATE

ISSUE DATE: 2019-08-28

JOB NUMBER: 19-907

A1.2
 SECOND FLOOR
 PLAN



1 GARAGE ADDN. FLOOR PLAN 1276 SF
1/4" = 1'-0"

CONCEPTUAL DRAWINGS FOR:
CADV ADDITION

305 FIFTH STREET
CAMDEN, MISSOURI

This Drawing is the property of
Columbia Associates. Unauthorized
reproduction is prohibited.

columbia associates

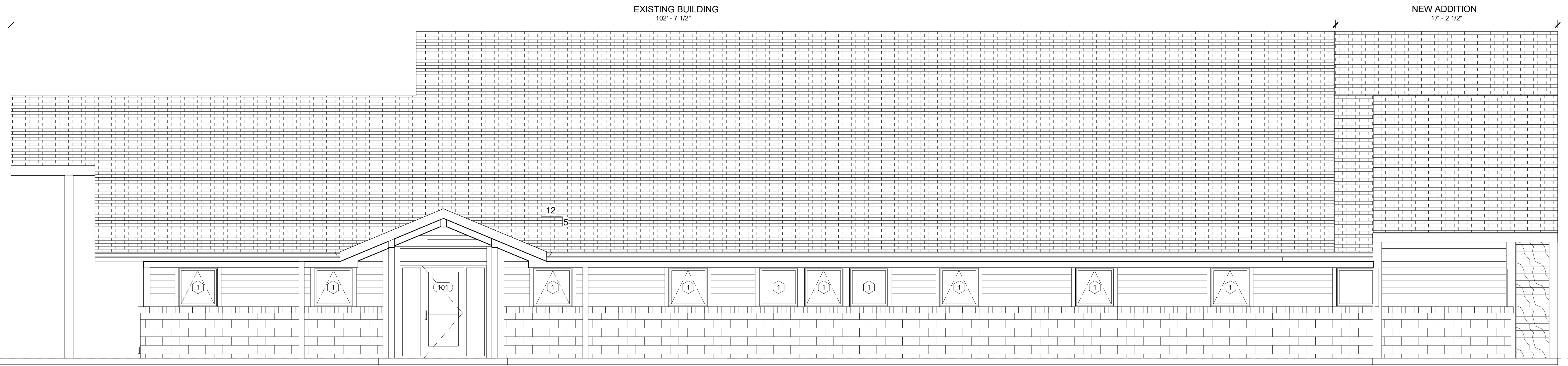
architecture
p.o. box 41
34 camden court
commercial interior design
columbia, missouri 65205
camden, missouri 65020
site planning
573.442.8888
573.443.3910
573.346.3000
573.346.3000

REVISIONS	
NUMBER	DATE

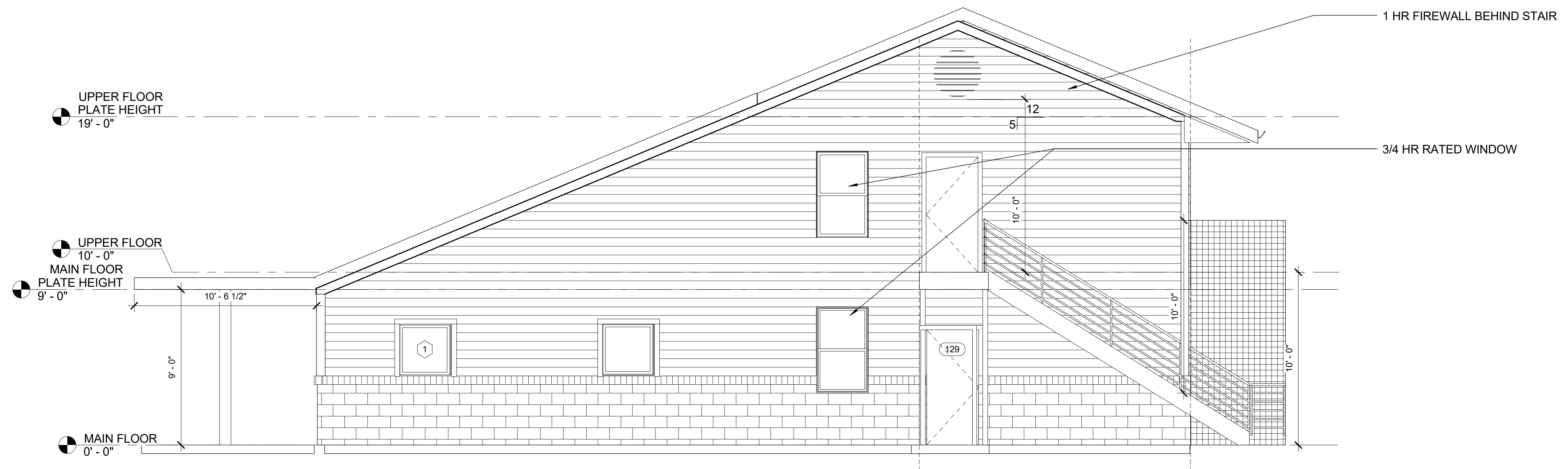
ISSUE DATE: 2019-08-28

JOB NUMBER: 19-907

A1.3
GARAGE ADDITION



1 EAST ELEVATION
1/4" = 1'-0"



3 NORTH ELEVATION
1/4" = 1'-0"

CONCEPTUAL DRAWINGS FOR:
CADV ADDITION

305 FIFTH STREET
CAMDEN, MISSOURI

This Drawing is the property of Columbia Associates. Unauthorized reproduction is prohibited.

columbia associates

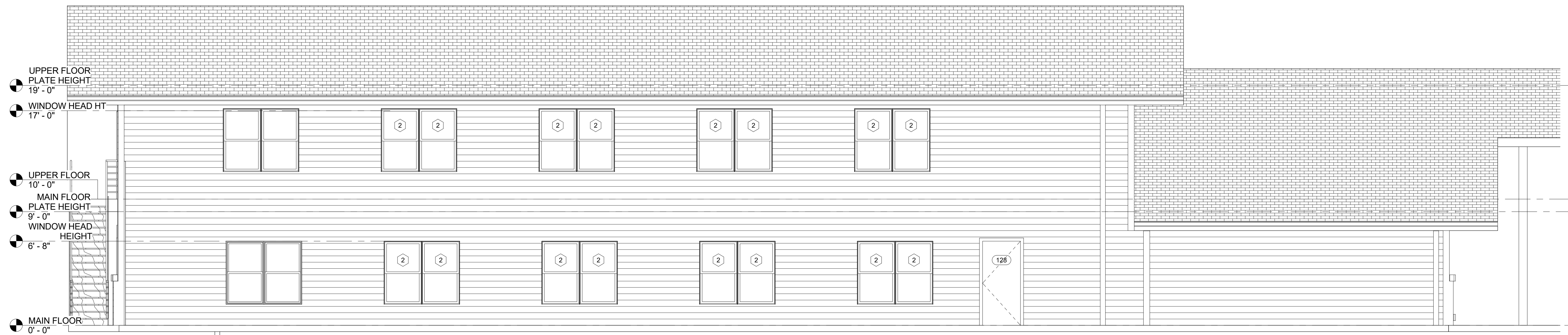
architecture commercial interior design
p.o. box 41 columbia, missouri 65205 573.442.8888 fax 573.443.3910
34 camden court camden, missouri 65020 573.346.3000 fax 573.346.3000

REVISIONS	
NUMBER	DATE
1	2012-01-19
1	2012-03-07

ISSUE DATE: 2019-08-28

JOB NUMBER: 19-907

A2.0
ELEVATIONS



3 WEST ELEVATION
1/4" = 1'-0"

CONCEPTUAL DRAWINGS FOR:
CADV ADDITION

305 FIFTH STREET
CAMDEN, MISSOURI

This Drawing is the property of
Columbia Associates. Unauthorized
reproduction is prohibited.

columbia associates

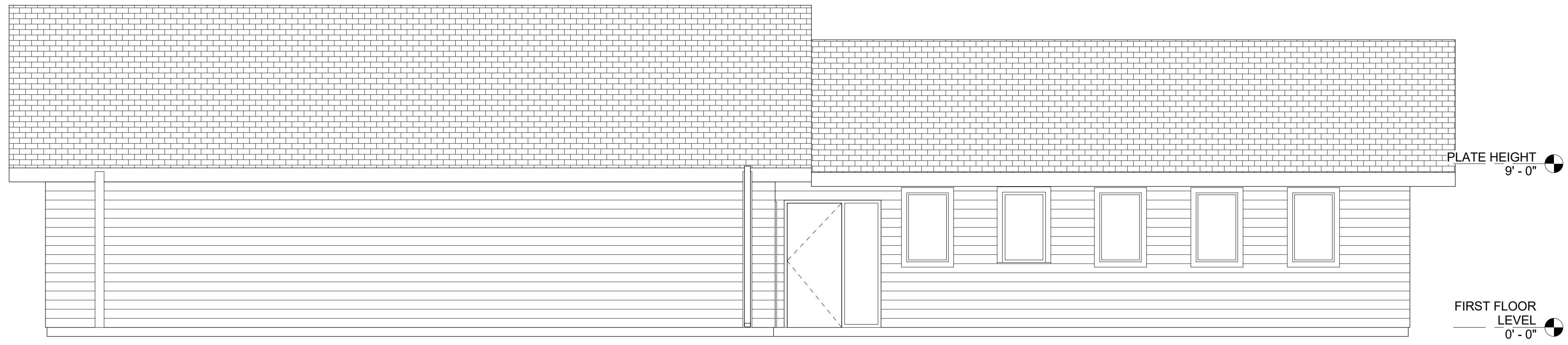
architecture commercial interior design site planning
p.o. box 41 camden, missouri 65205 573.442.8888 fax 573.443.3910
34 camden court camden, missouri 65020 573.346.3000 fax 573.346.3000

REVISIONS	
NUMBER	DATE
1	2012-01-19
3	2012-04-30

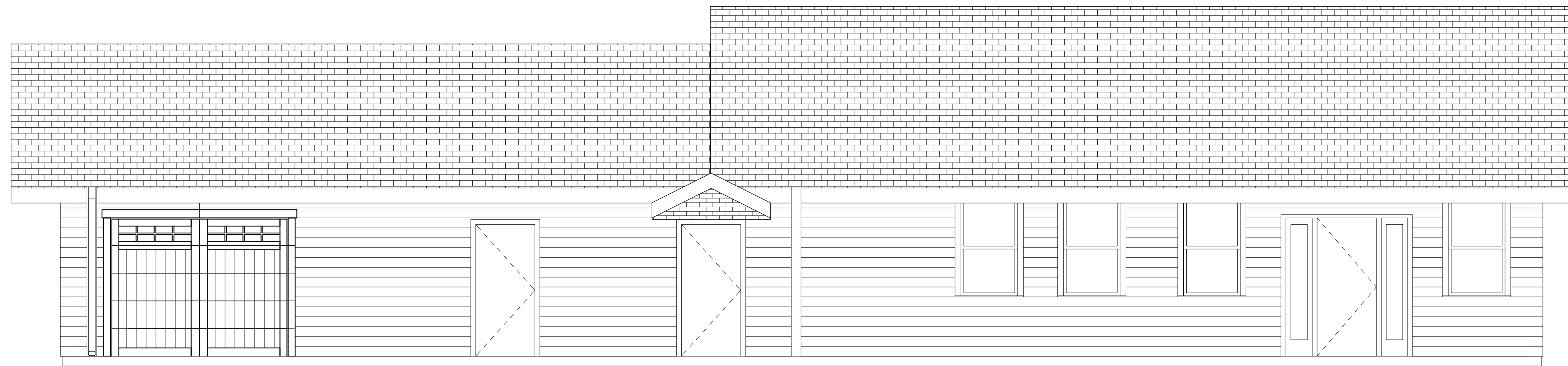
ISSUE DATE: 2019-08-28

JOB NUMBER: 19-907

A2.1
ELEVATIONS



3 SOUTH ELEVATION - GARAGE
1/4" = 1'-0"



5 NORTH ELEVATION - GARAGE
1/4" = 1'-0"

CONCEPTUAL DRAWINGS FOR:
CADV ADDITION

305 FIFTH STREET
CAMDENTON, MISSOURI

This Drawing is the property of Columbia Associates. Unauthorized reproduction is prohibited.

columbia associates

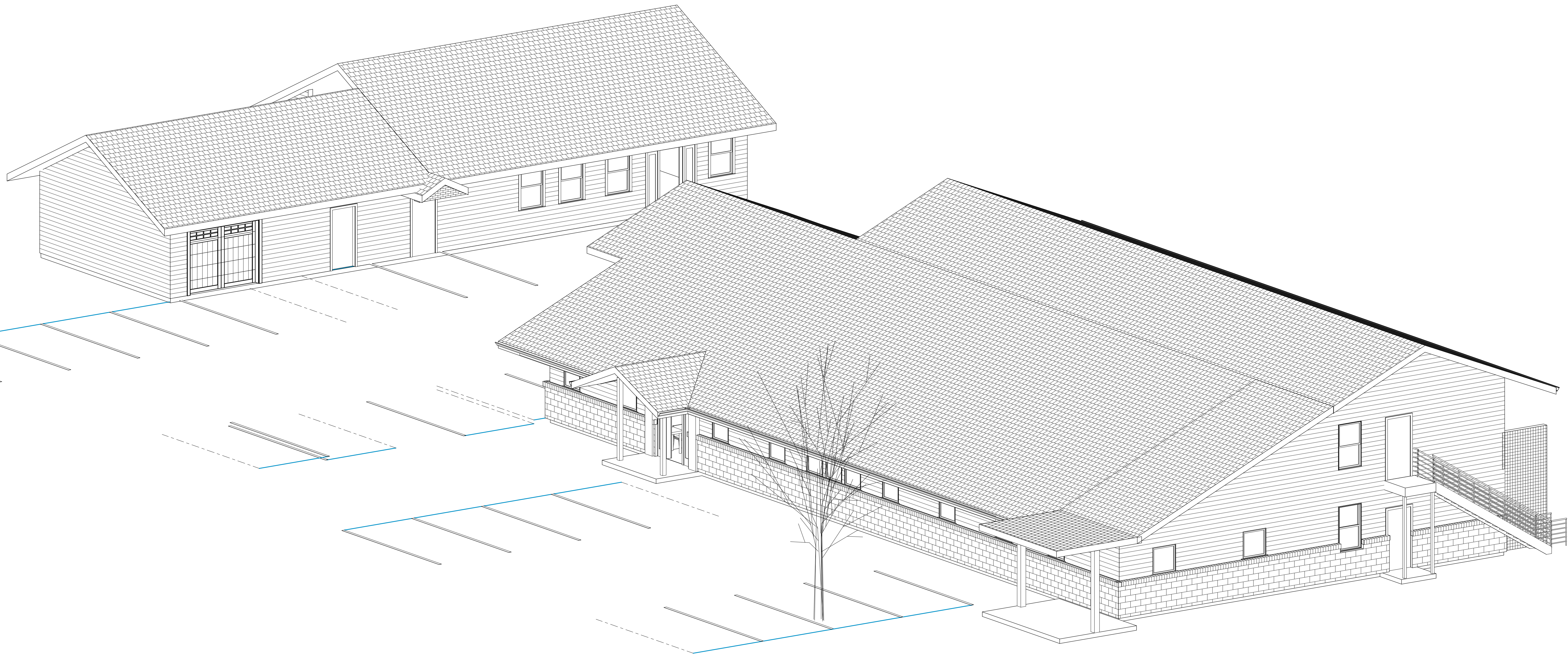
architecture commercial interior design site planning
p.o. box 41 camden, missouri 65205 573.442.8888 fax 573.443.3910
34 camden court camden, missouri 65020 573.346.3000 fax 573.346.3000

REVISIONS	
NUMBER	DATE
1	2012-01-19

ISSUE DATE: 2019-08-28

JOB NUMBER: 19-907

A2.2
GARAGE PLAN,
ELEVATIONS



1 PERSPECTIVE VIEW

CONCEPTUAL DRAWINGS FOR:
CADV ADDITION

305 FIFTH STREET
 CAMDENTON, MISSOURI

This Drawing is the property of
 Columbia Associates. Unauthorized
 reproduction is prohibited.

columbia associates

architecture commercial interior design site planning
 p.o. box 41 camdenton, missouri 65205 573.442.8888 fax 573.443.3910
 34 camden court camdenton, missouri 65020 573.346.3000 fax 573.346.3000

REVISIONS	
NUMBER	DATE

ISSUE DATE: 2019-08-28

JOB NUMBER: 19-907

A2.3
 3 DIMENSIONAL
 VIEWS